

Standard Collars, ERSC XG, ERSSC X

Technical requirements

Steel (Dia 4.8 – 9.6 mm)

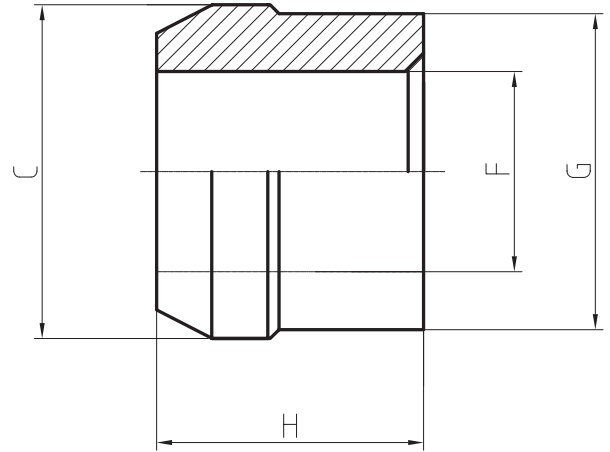
- Material:** Low Carbon Steel
- Smooth Surface:** Without Burr
- Heat Treatment:** Annealing
- Surface Treatment:** Minimum 5µm Zinc Clear and Waxed

Steel (Dia 12.7 – 28.5 mm)

- Heat Treatment:** Annealing. Hardness: HRB50-75
- Surface Treatment:** Minimum 10µm Zinc Clear and Waxed

Stainless steel

- Material:** Stainless steel
- Finish:** Natural



Series	06	08	10	12	16	20	24	28	32	36
Pin Dia	4.8 mm	6.4 mm	8 mm	9.6 mm	12.7 mm	15.9 mm	19.1 mm	22.2 mm	25.4 mm	28.5 mm
Pin Dia	3/16 "	1/4 "	5/16 "	3/8 "	1/2 "	5/8 "	3/4 "	7/8 "	1 "	1 1/8 "
Part no. Steel	ERSC 06G	ERSC 08G	ERSC 10G	ERSC 12G	ERSC 16G	ERSC 20G	ERSC 24G	ERSC 28G	ERSC 32G	ERSC 36G
Part no. St steel	ERSSC 06	ERSSC 08	ERSSC 10	ERSSC 12	ERSSC 16	ERSSC 20	ERSSC 24	ERSSC 28	ERSSC 32	
C (mm) Min - Max	7.90 - 8.20	10.55 - 10.85	12.70 - 13.02	15.20 - 15.50	20.60 - 21.40	25.60 - 26.40	30.60 - 31.40	35.60 - 36.40	40.30 - 41.40	45.90 - 46.80
C (inch) Min - Max	0.311 - 0.323	0.415 - 0.427	0.500 - 0.513	0.598 - 0.610	0.811 - 0.842	1.007 - 1.039	1.204 - 1.236	1.401 - 1.433	1.586 - 1.629	1.807 - 1.842
F (mm) Min - Max	4.75 - 4.98	6.50 - 6.73	7.72 - 7.92	9.53 - 9.78	13.10 - 13.70	16.55 - 16.85	19.70 - 20.05	23.15 - 23.70	26.05 - 26.65	29.25 - 29.95
F (inch) Min - Max	0.187 - 0.196	0.256 - 0.265	0.304 - 0.312	0.375 - 0.385	0.515 - 0.539	0.651 - 0.663	0.775 - 0.789	0.911 - 0.933	1.025 - 1.049	1.51 - 1.179
G (mm) Min - Max	7.72 - 7.90	10.21 - 10.39	12.32 - 12.55	14.99 - 15.24	19.45 - 20.30	24.65 - 25.60	29.60 - 29.95	34.20 - 34.90	39.00 - 40.00	44.20 - 44.95
G (inch) Min - Max	0.304 - 0.311	0.402 - 0.409	0.485 - 0.494	0.590 - 0.600	0.765 - 0.799	0.970 - 1.007	1.165 - 1.179	1.346 - 1.374	1.535 - 1.574	1.740 - 1.769
H (mm) Min - Max	5.59 - 6.60	7.37 - 8.13	8.89 - 9.65	10.92 - 11.68	15.50 - 16.35	21.50 - 22.20	23.65 - 24.35	27.55 - 28.25	31.25 - 32.35	35.20 - 36.20
H (inch) Min - Max	0.220 - 0.260	0.290 - 0.320	0.350 - 0.380	0.430 - 0.460	0.610 - 0.643	0.846 - 0.874	0.931 - 0.958	1.084 - 1.112	1.230 - 1.273	1.385 - 1.425