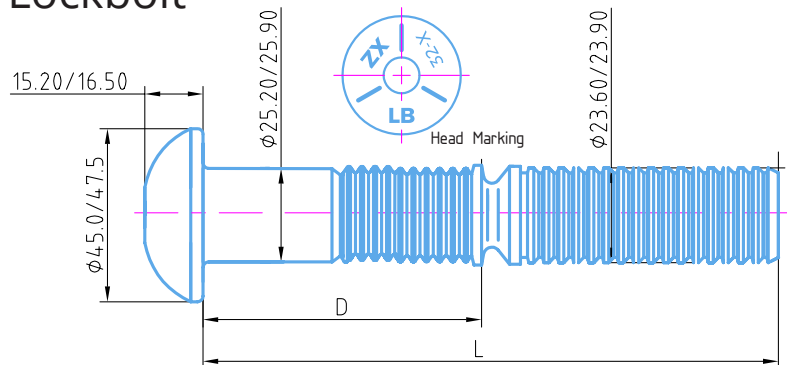
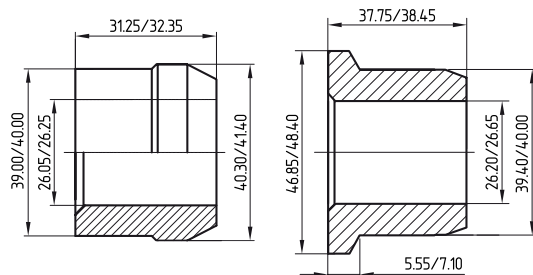


ERSB32-X-XZ, 25.4mm (1") Round Head Lock Bolt

Lockbolt



Collars



ERSC32G
25.4mm Standard

CAT No. 57-150800
ERSCF32G
25.4mm Flanged

Collar Material: Low Carbon Steel
Collar Finish: Min 5µm Zinc Clear and Waxed

Technical Properties

Pin Break Load: 250-305 (KN) **Min Shear Strength:** 251 (KN)
Min Ultimate Tensile: 323 (KN) **Max Hole Diameter:** 27 (mm)
Clamping Load: 229 (KN) **Surface Treatment:** Black and Oiled
Hardness: 25-34 (HRC) **Raw Material Specification:** Alloy Steel

CAT No.	Part Number	Grip Range(mm)		D (mm)		L (mm)	Head Marking
		ERSC32G Collar	ERSCF32G Collar	Min	Max	+3.5/-1.0	
57-150803	ERSB32-20-XZ	19.10 - 38.10	12.70 - 31.80	71.10	72.30	155.58	32-20-XZ
57-150806	ERSB32-32-XZ	38.10 - 57.20	31.80 - 50.80	90.15	91.35	174.63	32-32-XZ
57-150809	ERSB32-44-XZ	57.20 - 76.20	50.80 - 69.90	109.20	110.40	193.68	32-44-XZ
57-150812	ERSB32-56-XZ	76.20 - 95.30	69.90 - 88.90	128.25	129.45	212.73	32-56-XZ
57-150815	ERSB32-68-XZ	95.30 - 114.30	88.90 - 108.00	14 7.30	148.50	231.78	32-68-XZ
57-150818	ERSB32-80-XZ	114.30 - 133.40	108.00 - 127.00	166.35	167.55	250.83	32-80-XZ
57-150821	ERSB32-92-XZ	133.40 - 152.40	127.00 - 146.10	18 5.40	186.60	269.88	32-92-XZ
57-150824	ERSB32-104-XZ	152.40 - 171.50	146.10 - 165.10	204.4 5	205.65	288.93	32-104-XZ
57-150827	ERSB32-116-XZ	171.50 - 190.50	165.10 - 184.20	223.50	224.70	307.98	32-116-XZ
57-150830	ERSB32-128-XZ	190.50 - 209.50	184.20 - 203.20	242.55	24 3.75	327.03	32-128-XZ
57-150833	ERSB32-140-XZ	209.50 - 228.60	203.20 - 222.30	261.60	262.80	346.08	32-140-XZ
57-150836	ERSB32-152-XZ	228.60 - 247.70	222.30 - 241.30	280.65	281.85	365.13	32-152-XZ
57-150839	ERSB32-164-XZ	247.70 - 266.70	241.30 - 260.40	299.70	300.90	384.18	32-164-XZ
57-150842	ERSB32-176-XZ	266.70 - 285.50	260.40 - 279.40	318.75	319.95	403.23	32-176-XZ
57-150845	ERSB32-188-XZ	285.50 - 304.80	279.40 - 298.50	337.8	339	422.28	32-188-XZ
57-150848	ERSB32-200-XZ	304.80 - 323.90	298.50 - 317.50	35 6.85	358.05	441.33	32-200-XZ
57-150851	ERSB32-212-XZ	323.90 - 342.90	317.50 - 336.60	375.90	377.10	460.38	32-212-XZ
57-150854	ERSB32-224-XZ	342.90 - 362.00	336.60 - 355.60	394.95	396.15	479.43	32-224-XZ
57-150857	ERSB32-236-XZ	362.00 - 381.00	355.60 - 374.70	414.00	415.20	498.48	32-236-XZ
57-150860	ERSB32-248-XZ	381.00 - 400.00	374.70 - 393.70	43 3.05	434.25	517.53	32-248-XZ
57-150863	ERSB32-260-XZ	400.00 - 419.10	393.70 - 412.80	452.10	4 53.30	536.58	32-260-XZ
57-150866	ERSB32-272-XZ	419.10 - 438.20	412.80 - 431.80	471.15	4 72.35	555.63	32-272-XZ
57-150869	ERSB32-284-XZ	438.20 - 457.20	431.80 - 450.90	490.20	491.40	574.68	32-284-XZ
57-150872	ERSB32-296-XZ	457.20 - 476.30	450.90 - 469.90	509.25	510.45	593.73	32-296-XZ
57-150875	ERSB32-308-XZ	476.30 - 495.30	469.90 - 489.00	528.30	529.50	612.78	32-308-XZ
57-150878	ERSB32-320-XZ	495.30 - 514.40	489.00 - 508.00	547.35	54 8.55	631.83	32-320-XZ
57-150881	ERSB32-332-XZ	514.40 - 533.40	508.00 - 527.10	56 6.40	567.60	650.88	32-332-XZ
57-150884	ERSB32-344-XZ	533.40 - 552.50	527.10 - 546.10	58 5.45	586.65	669.92	32-344-XZ
57-150887	ERSB32-356-XZ	552.50 - 571.50	546.10 - 565.20	604.50	605.70	688.97	32-356-XZ
57-150890	ERSB32-368-XZ	571.50 - 590.60	565.20 - 584.20	623.55	624.75	708.03	32-368-XZ

A range of Thread Head Lockbolt Studs for various rail applications is available on request.

