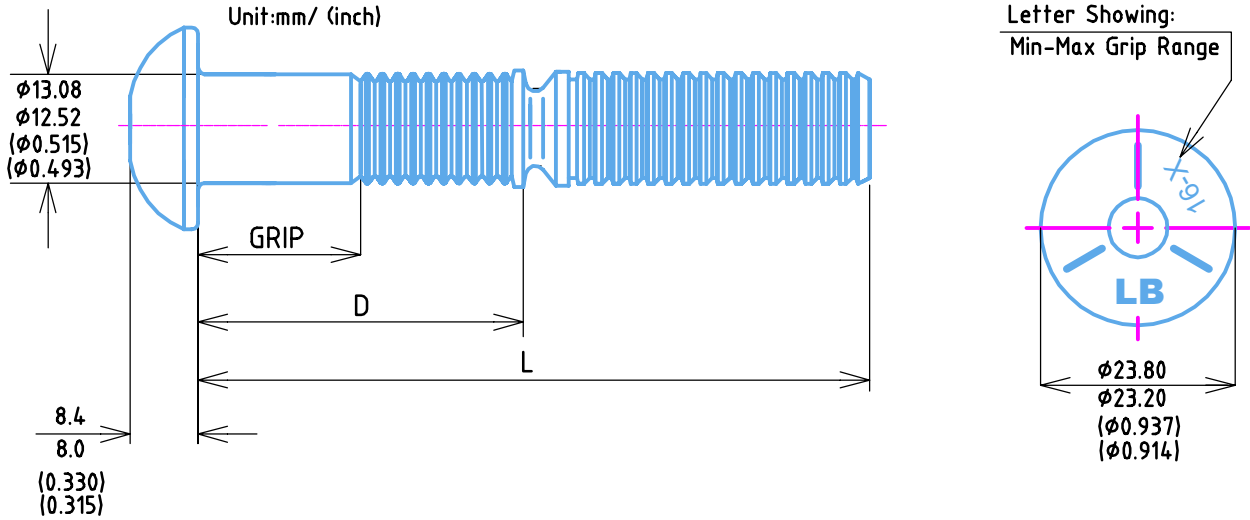


ERSB 16-XG - 12.7mm (1/2") Round Head Lock Bolt



Technical Requirements

Min Ultimate Tensile:	76 (KN)	Max Pin Protusion:	9.5 (mm)
Clamping Load:	54	Max Pin Intrusion:	1.6 (mm)
Min Shear Strength:	64 (KN)	Surface Treatment:	10 µm Zinc Clear
Max Hole Diameter:	14.2 (mm)	Raw Material Specification:	Carbon Steel

1/2"	Part Number	Grip (mm)		Grip (inch)		D (mm)		D (inch)		L (mm)		L (inch)		Head Marking
		Min	Max	Min	Max	Min	Max	Min	Max	Min	Max	Min	Max	
16-4	ERSB16-04G	6.35	12.7	0.25	0.5	30.3	31.3	1.2	1.23	79.1	82.1	3.12	3.23	16-4
16-8	ERSB16-08G	12.7	19.05	0.5	0.75	36.7	37.7	1.45	1.48	85.4	88.4	3.37	3.48	16-8
16-12	ERSB16-12G	19.05	25.4	0.75	1	43	44	1.7	1.73	91.8	94.8	3.62	3.73	16-12
16-16	ERSB16-16G	25.4	31.75	1	1.25	49.4	50.4	1.95	1.98	98.1	101.1	3.87	3.98	16-16
16-20	ERSB16-20G	31.75	38.1	1.25	1.5	55.7	56.7	2.2	2.23	104.5	107.5	4.12	4.23	16-20
16-24	ERSB16-24G	38.1	44.45	1.5	1.75	62.1	63.1	2.45	2.48	110.8	113.8	4.37	4.48	16-24
16-28	ERSB16-28G	44.45	50.8	1.75	2	68.4	69.4	2.7	2.73	117.2	120.2	4.62	4.73	16-28
16-32	ERSB16-32G	50.8	57.15	2	2.25	74.8	75.8	2.95	2.98	123.5	126.5	4.87	4.98	16-32
16-36	ERSB16-36G	57.15	63.5	2.25	2.5	81.12	82.1	3.2	3.23	129.9	132.9	5.12	5.23	16-36
16-40	ERSB16-40G	63.5	69.85	2.5	2.75	87.5	88.5	3.45	3.48	136.2	139.2	5.37	5.48	16-40
16-44	ERSB16-44G	69.85	76.2	2.75	3	93.8	94.8	3.7	3.73	142.6	145.6	5.62	5.73	16-44
16-48	ERSB16-48G	76.2	82.55	3	3.25	100.2	101.2	3.95	3.98	148.9	151.9	5.87	5.98	16-48
16-52	ERSB16-52G	82.55	88.9	3.25	3.5	106.5	107.5	4.19	4.23	155.3	158.3	6.11	6.23	16-52
16-56	ERSB16-56G	88.9	95.25	3.5	3.75	112.9	113.9	4.44	4.48	161.6	164.6	6.36	6.48	16-56
16-60	ERSB16-60G	95.25	101.6	3.75	4	119.2	120.2	4.69	4.73	168	171	6.61	6.73	16-60
16-64	ERSB16-64G	101.6	107.95	4	4.25	125.6	126.6	4.94	4.98	174.3	177.3	6.86	6.98	16-64
16-68	ERSB16-68G	107.95	114.3	4.25	4.5	131.9	132.9	5.19	5.23	180.7	183.7	7.11	7.23	16-68
16-72	ERSB16-72G	114.3	120.65	4.5	4.75	138.3	139.3	5.44	5.48	187	190	7.36	7.48	16-72
16-76	ERSB16-76G	120.65	127	4.75	5	144.6	145.6	5.69	5.73	193.4	196.4	7.61	7.73	16-76