

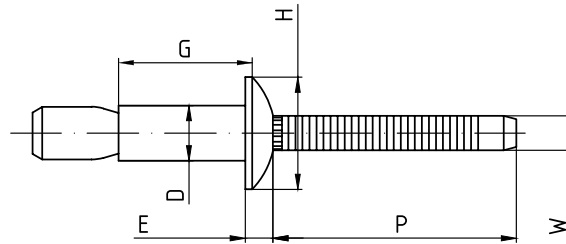
Mega Lock - Steel

Technical Properties

Material - Body: Carbon Steel, Mandrel: Carbon Steel

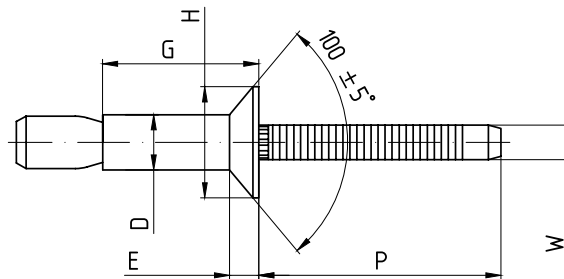
Surface - Body: Cr3 +zinc clear, Mandrel: Cr3 +zinc clear

Round Head



Part Number	Grip Range (mm)	D (Ø mm)	E (mm)	G (mm)	H (Ø mm)	P (mm)	W (Ø mm)	Tensile (N)	Shear (N)
MLSR-6-4	1.6 - 6.9	4.8 ^{+0.08} / _{-0.15}	2.2 max	10 ±0.99	9.5 ±0.50	≥ 27	3.1 max	4400	5700
MLSR-6-7	1.6 - 11.0	4.8 ^{+0.08} / _{-0.15}	2.2 max	14 ±0.99	9.5 ±0.50	≥ 27	3.1 max	4400	5700
MLSR-6-E	1.6 - 11.0	4.8 ^{+0.08} / _{-0.15}	2.2 max	14 ±0.99	9.5 ±0.50	≥ 27	3.1 max	4400	5700
MLSR-6-12	14.3 - 19.0	4.8 ^{+0.08} / _{-0.15}	2.2 max	22.5 ref	9.5 ±0.50	≥ 27	3.1 max	4400	5780
MLSR-8-6	2.1 - 9.5	6.4 ^{+0.18} / _{-0.10}	2.9 ±0.3	14.0 ^{+1.00} / _{-0.00}	12.9 ±0.50	27	4.1	9790	12237
MLSR-8-10	2.1 - 15.8	6.4 ^{+0.18} / _{-0.10}	2.9 ±0.3	20.0 ^{+1.00} / _{-0.00}	12.9 ±0.50	27	4.1	9790	12237
MLSR-8-E	2.1 - 15.8	6.4 ^{+0.18} / _{-0.10}	2.9 ±0.3	20.0 ^{+1.00} / _{-0.00}	12.9 ±0.50	27	4.1	9790	12237
MLSR-8-E12.6	9.0 - 19.5	6.4 ^{+0.08} / _{-0.15}	3.0 max	24.0 ±0.99	12.7 ±0.50	≥ 28	4.1 max	8200	10600
MLSR-8-14	14.7 - 22.2	6.4 ^{+0.08} / _{-0.15}	3.0 max	27.0 ±1.00	12.7 ±0.50	≥ 28	4.0 ref	8228	11120
MLSR-8-18	21.0 - 28.5	6.4 ^{+0.08} / _{-0.15}	3.0 max	33.0 ±0.99	12.7 ±0.50	≥ 28	4.0 ref	8200	10600
MLSR-12-10	3.0 - 15.9	9.6 ^{+0.08} / _{-0.15}	4.4 max	21.0 ref	19.0 ±0.50	≥ 39	6.2 max	17800	24920
MLSR-12-12	3.1 - 14.5	9.6 ^{+0.08} / _{-0.15}	4.4 max	21.0 ±0.99	19.0 ±0.50	≥ 39	4.0 ref	17800	24920
MLSR-12-18	15.9 - 28.6	9.6 ^{+0.08} / _{-0.15}	4.4 max	35.8 ref	19.0 ±0.50	≥ 39	6.2 max	17800	24920

Countersunk Head



Part Number	Grip Range (mm)	D (Ø mm)	E (mm)	G (mm)	H (Ø mm)	P (mm)	W (Ø mm)	Tensile (N)	Shear (N)
MLSCSK-6-6	3.2 - 8.4	4.8 ^{+0.08} / _{-0.15}	1.8 ref	12 ±0.99	8.8 ^{+0.00} / _{-0.50}	≥ 27	3.1 max	4400	5700
MLSCSK-6-9	7.7 - 12.7	4.8 ^{+0.08} / _{-0.15}	1.8 ref	16 ±0.99	8.8 ^{+0.00} / _{-0.50}	≥ 27	3.1 max	4400	5700
MLSCSK-8-8	4.1 - 12.1	6.4 ^{+0.08} / _{-0.15}	2.0 ref	16 ±0.99	10.6 ^{+0.00} / _{-0.50}	≥ 28	4.1 max	8200	10600
MLSCSK-8-12	10.5 - 18.4	6.4 ^{+0.08} / _{-0.15}	2.0 ref	22 ±0.99	10.6 ^{+0.00} / _{-0.50}	≥ 28	4.1 max	8200	10600
MLSCSK-12-12	6.1 - 19.1	9.6 ^{+0.08} / _{-0.15}	3.4 max	25 ±0.99	9.8 ^{+0.00} / _{-0.60}	≥ 39	6.2 max	17800	24920

External locking version available on request