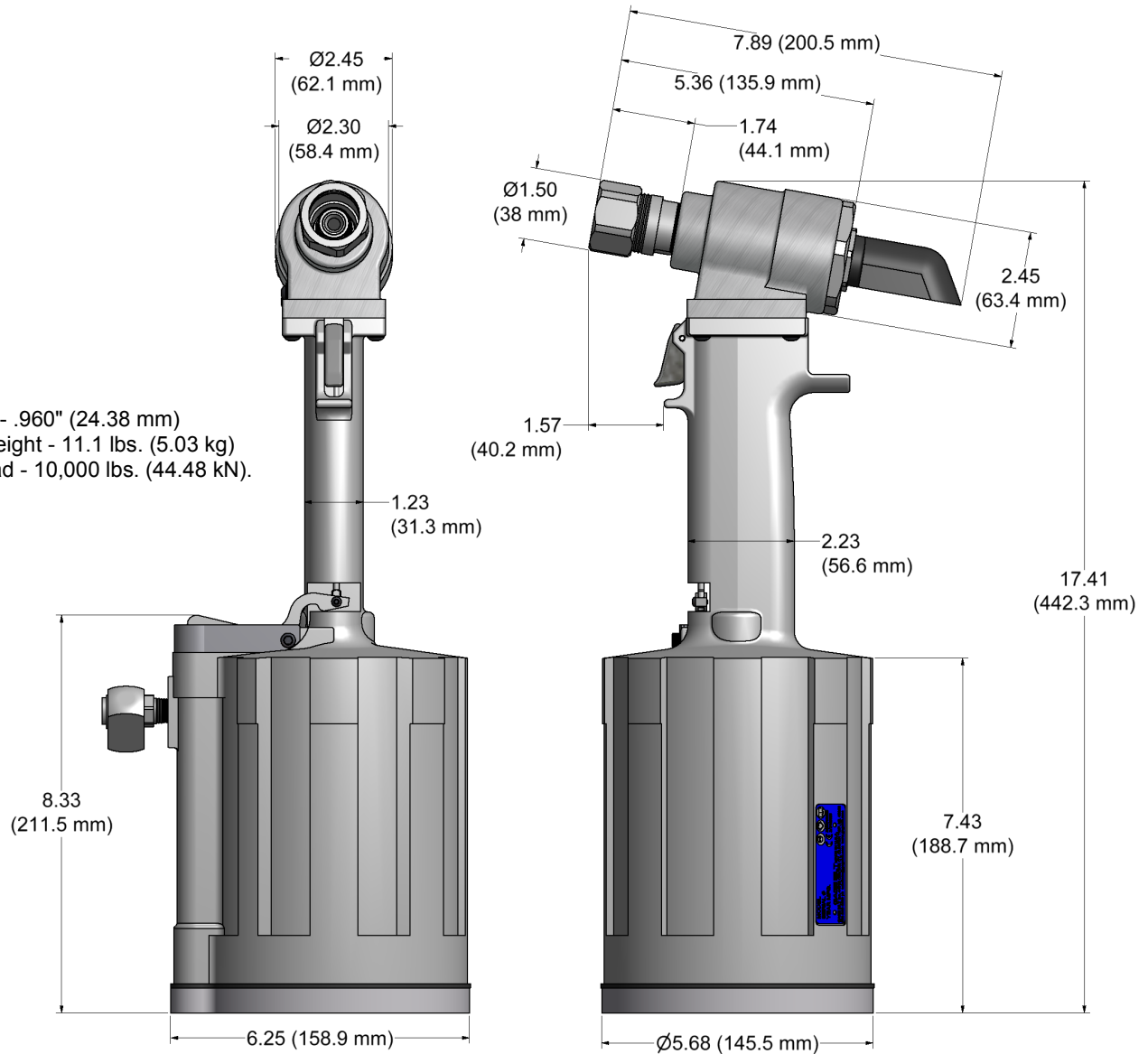


# GB756

## INSTALLATION TOOL

### GB756

Stroke - .960" (24.38 mm)  
Tool weight - 11.1 lbs. (5.03 kg)  
Pull load - 10,000 lbs. (44.48 kN).



### DESCRIPTION

The GB756 is a hydraulic installation tool designed specifically for the efficient installation of a wide range of blind, lockbolt and Magna-Grip® fasteners thru 3/8" diameter. It weighs 11.1 lbs. (5.03 kg) and can be operated in any position with one hand. It has a .960" (24.38 mm) rivet setting stroke and a rated pull load of 10,000 lbs. (44.48 kN).

The GB756 riveter operates on 90 to 100 psi (6.2-6.9 bar) of air pressure, providing the maximum efficiency. At 90 psi. (6.2 bar) of air pressure, the GB756 does not exceed 81.5 dB (A) and consumes 6.0 cfm at 20 cycles per minute.

The air inlet is provided with 1/4-18 female pipe thread for accepting the user's air hose fitting.

**NOSE ASSEMBLIES ARE NOT FURNISHED WITH THIS RIVETER AND MUST BE ORDERED SEPARATELY.**



# GB756-NOSE ASSEMBLY SELECTION CHART & ACCESSORIES



## ACCESSORIES (SOLD SEPARATELY)

## NOSE ASSEMBLIES (SOLD SEPARATELY)

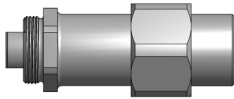
**Air Bleeder Assy #704153**  
(Equivalent to #700A77)  
Sold Separately)



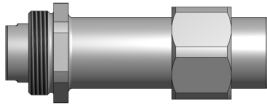
**Catcher Bag-Stem #756610**  
(Sold Separately)



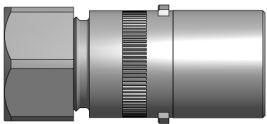
**Adapter Assy #353204**  
Adapts 204 series noses to GB756 tool with  
756152 Stroke Limiter  
(Sold Separately)



**Adapter Assy #353205**  
Adapts 205 series noses to GB756 tool  
with 756153 Stroke Limiter  
(Sold Separately)



**Adapter Assy #745751**  
Adapts -54 & -58 RA series nose assemblies to  
GB756 installation tool w/ 756155 stroke limiter.  
(Sold Separately)



**Stroke Limiter #756152**  
Required with all offset  
204 & -58 RA series nose  
assy's when used on  
GB756 tool.  
(Sold Separately)



**Stroke Limiter #756153**  
Required with all offset  
205 series nose assy's  
when used on  
GB756 tool.  
(Sold Separately)



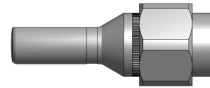
**Stroke Limiter #756155**  
Required with all  
-54 RA series  
nose assy's when used  
on GB756 tool.  
(Sold Separately)



**RIVETER KITS**  
Gage Bilt offers a wide selection  
of standard and custom kits  
tailored to your needs.  
Contact us for more information.



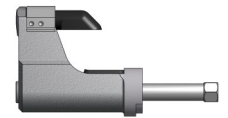
### STRAIGHT



### RIGHT ANGLE



### OFFSET



FASTENER	DIA.	STRAIGHT	**RIGHT ANGLE	*OFFSET	
ASP® 2 ASP & ASP PF ASP FF & ASP F ASP-LC and MAF	13/64 17/64 21/64	ASP06-745C-23 ASP08-745B-23 ASP10-755-23	ASP06-745C-48 ASP08-745B-48 ASP10-755-48	***ASP06-751B-54RA ASP06-204D-27OS ASP08-204D-27OS ASP10-204D-27OS	ASP06-204D-37OS ASP08-204D-37OS ASP10-204D-37OS
BOM® AVBOLT®	1/4 5/16	BOM08-755A-23 BOM10-756-26			
COMMERCIAL LOCKBOLTS C6L® AVDELOK®	3/16 1/4 5/16 3/8	NAS06-2581-12 NAS08-2581-12 NAS08-2581-23 LB10-745C-48 LB12-756-26	NAS06-2581-48 NAS08-2581-48 NAS10-2581-48 NAS12-756-48	NAS06-204C-25OS NAS08-204C-25OS NAS08-205A-31 NAS10-205A-31 NAS12-205A-31	NAS06-204D-30OS NAS08-204D-30OS NAS08-204C-34OS
CONTAINER BOLT FLOOR BOLT	3/8 5/16	HT12-756-23 FT10-353A-28			
LGP® LOCKBOLT	5/32	LGP05-2581-12 LGP05-2581-48 LGP06-2581-12 LGP06-2581-48	LGP05-2581-23 LGP06-2581-23	LGP05-204C-25OS LGP05-204C-34OS LGP06-204C-25OS LGP06-204C-34OS	LGP05-204C-30OS LGP06-204D-30OS
LGPL2SC-V BACB30VM LGPL18SC-V BACB30XT LGPL4SC-V ABS0548 LGPL2SP-V BACB30VN LGPL4SP-V ASNA2392 LGPL8SC-V BACB30WD LGPL9SC-V BACB30WB LGPL9SP-V BACB30VY BACB31N	7/32 1/4 5/16 3/8	LGPL06-2581-12 LGPL07-2581-12 LGPL07-755-48 LGPL08-2581-12 LGPL08-2581-48 LGPL10-2581-12 LGPL10-2581-48 LGPL12-745B-12 LGPL12-756-48	LGPL07-755-23 LGPL08-2581-23 LGPL10-2581-23	LGPL07-204C-25OS LGPL07-204C-34OS LGPL08-204C-25OS LGPL08-204C-34OS LGPL10-205D-31 LGPL12-205A-31	LGPL07-204C-30OS LGPL08-204D-30OS LGPL08-205A-31
MLGP® (MILLIMETER) LOCKBOLT	4mm 5mm 6mm 8mm 10mm	MLGP4-2581-12 MLGP4-2581-23 MLGP5-2581-12 MLGP5-2581-23 MLGP6-2581-12 MLGP6-2581-23 MLGP8-2581-12 MLGP8-2581-23 MLGP10-2581-23	MLGP4-2581-48 MLGP5-2581-48 MLGP6-2581-48 MLGP8-2581-48	MLGP4-204C-25OS MLGP4-204C-34OS MLGP5-204C-25OS MLGP5-204C-34OS MLGP6-204C-25OS MLGP6-204C-34OS MLGP8-204C-25OS MLGP8-204C-34OS	MLGP4-204C-30OS MLGP5-204D-30OS MLGP6-204D-30OS MLGP8-205A-31
NAS and GP® SHEAR/TENSION LOCKBOLTS	5/32 3/16	NASS05-2581-12 NASS05-2581-23 NASS05-2581-48 NAS06-2581-12 NAS06-2581-48 NAS08-2581-12 NAS08-2581-48 NAS10-2581-12 NAS10-2581-48 NAS12-745B-12 NAS12-756-48	NAST05-2581-12 NAST05-2581-23 NAST05-2581-48 NAS06-2581-23 NAS08-2581-23	NASS05-204C-25OS NASS05-204C-30O NASS05-204C-34O NAS06-204C-25OS NAS06-204C-34OS NAS08-204C-25 NAS08-204C-34 NAS10-205D-31 NAS12-205A-31	NAST05-204C-20O NAST05-204C-30O NAST05-204C-34O NAS06-204D-30OS NAS08-204D-30OS NAS08-205A-31
MGP® (MILLIMETER) LOCKBOLT	4mm 5mm 6mm 8mm 10mm	MGP4-2581-23 MGP5-2581-23 MGP6-2581-23 MGP8-2581-23 MGP10-2581-23	MGP4-2581-48 MGP5-2581-48 MGP6-2581-48	MGP4-204C-25OS MGP4-204C-34OS MGP5-204C-25OS MGP5-204C-34OS MGP6-204C-25OS MGP6-204C-34OS	MGP4-204C-30OS MGP5-204D-30OS MGP6-204D-30OS
MULTI-GRIP LOCKBOLT MAGNA-GRIP® and MAXLOK®	3/16 1/4 5/16 3/8	MG06-745-24 MG08-745-24 MG10-756-28 MG12-756-28	MG06-745-48 MG08-745-48		
MULTI-GRIP STRUCTURAL BLIND RIVET	1/4 5/16 3/8	*MSL08-752A-21 MSL10-353-28 MGL12-353C-28			
OVERSIZE STRUCTURAL RIVET	1/4 5/16 3/8	OS08-353A-48 OS10-756-26 OS12-756A-26	OS10-756-48 OS12-756A-48		
BLIND BOLT (SINGLE ACTION) WITH OR W/O DRIVE WASHER	5/32 3/16 1/4	SB05-745C-23 SB06-745B-23 SB08-755-23	SB05-745C-48 SB06-745B-48 SB08-755-48	***SB05-751C-54RA ***SB06-751B-54RA ***SB08-713A-58RA	SB05-204D-27OS SB06-204D-27OS SB08-204D-27OS SB08-205A-35 SB10-205A-35 SB12-205A-35
BLIND BOLT (SINGLE ACTION) WITH DRIVE WASHER	5/32 3/16 1/4	UBB05-745C-23 UBB06-745B-23 UBB08-755-23	UBB05-745C-48 UBB06-745B-48 UBB08-755-48	***UBB05-751C-54RA ***UBB06-751B-54RA ***UBB08-713A-58RA	UBB05-204D-27OS UBB06-204D-27OS UBB08-204D-27OS UBB08-205B-35 UBB10-205B-35 UBB12-205A-35

ASP®, BOM®, LGP®, C6L®, GP®, and MAGNA-GRIP® ARE REGISTERED TRADEMARKS OF ARCONIC INC. AVBOLT®, AVDELOK®, and MAXLOK® ARE REGISTERED TRADEMARKS OF AVDEL UK LIMITED. MXI-BOLT® IS A REGISTERED TRADEMARK OF CHERRY AEROSPACE FASTENERS.

**GAGE BILT CERTIFIES THE GB756 WILL INSTALL THE ABOVE FASTENERS**

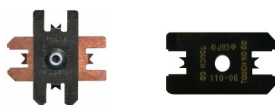
See [www.gagebilt.com/nose\\_assemblies.php](http://www.gagebilt.com/nose_assemblies.php) for nose assembly information (data sheets)

ALL OFFSET 204 SERIES NOSES REQUIRE 353204 ADAPTER WITH 756152 STROKE LIMITER.
ALL OFFSET 205 SERIES NOSES REQUIRE 353205 ADAPTER WITH 756153 STROKE LIMITER.
*NOSE REQUIRES 745751 ADAPTER.
***54RA RIGHT ANGLE SERIES NOSES REQUIRE 745751 ADAPTER WITH 756155 STROKE LIMITER.
***58RA RIGHT ANGLE SERIES NOSES REQUIRE 745751 WITH 756152 STROKE LIMITER.

NOTE: THE LAST 2 DIGITS OF THE NOSE ASSEMBLY REPRESENTS THE LENGTH THE NOSE EXTENDS FROM THE TOOL. I.E. -20 = 2.0 INCHES

Rev. 3/18

**GAGE BILT ALSO SUPPLIES PIN & COLLAR  
SWAGE INSPECTION GAGES TO CERTIFY  
CORRECT SWAGE INSTALLATION.**



**Grip Gage #GB105093**  
(Equivalent to #105093)  
For NAS LOCKBOLTS and blind fasteners  
(Sold Separately)

