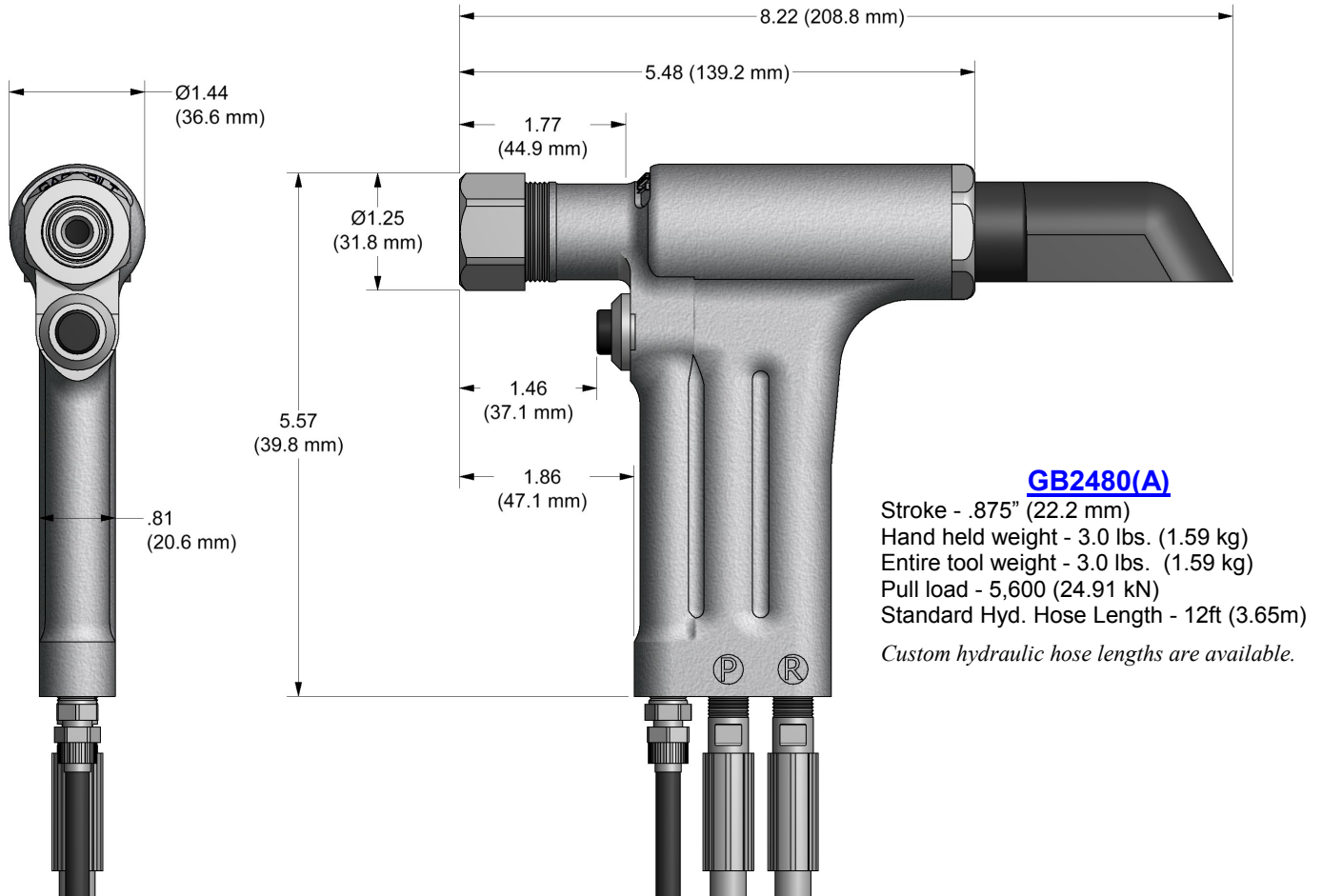


GB2480 GB2480A

HYDRAULIC INSTALLATION TOOL



GB2480(A)

Stroke - .875" (22.2 mm)
Hand held weight - 3.0 lbs. (1.59 kg)
Entire tool weight - 3.0 lbs. (1.59 kg)
Pull load - 5,600 (24.91 kN)
Standard Hyd. Hose Length - 12ft (3.65m)
Custom hydraulic hose lengths are available.

DESCRIPTION

The GB2480 & GB2480(A) are a hydraulic installation tool designed specifically for the efficient installation of blind fasteners, lock-bolts and Multi-Grip fasteners thru 1/4" diameter. It weighs just over 3 lbs. (1.59 kg) and can be operated in any position. It has an .875" (22.2 mm) rivet setting stroke and rated pull load of 5,600 lbs. (24.91 kN).

The GB2480 (electric actuated) installation tool operates on hydraulic pressure developed by the GB940 Powerunit set at 8,400 psi (579.1 bar) max PULL pressure and 3,200 psi (220.6 bar) max RETURN pressure. The tool comes equipped with 12 ft. (3.65 m) hydraulic hoses and couplings, electric switch and cord.

The GB2480(A) (air actuated) installation tool operates on hydraulic pressure developed by the GB910 & GB912 Powerunits set at 8,400 psi (579.1 bar) max PULL pressure and 3,200 psi (220.6 bar) max RETURN pressure. The tool comes equipped with 12 ft. (3.65 m) hydraulic hoses and couplings, air actuator and tubing.

NOSE ASSEMBLIES ARE NOT FURNISHED WITH THE RIVETER AND MUST BE ORDERED SEPARATELY.



ACCESSORIES



Catcher Bag-Stem #756610 (Sold Separately)



Grip Gage #269G3 (Similar to #269C3)

For CHERRYMAX® and CHERRYLOCK® rivets
(Sold Separately)

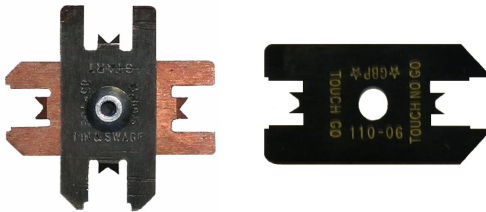


Grip Gage #GB105093 (Equivalent to #105093)

For NAS LOCKBOLTS and blind fasteners
(Sold Separately)



Gage Bilt also supplies pin & collar swage inspection gages to certify swage installation.
(Sold Separately)



Gage Bilt offers a wide selection of standard and custom kits tailored to your needs. Contact us for more information.

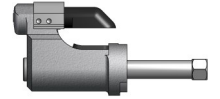
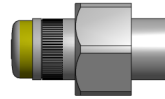


NOSE ASSEMBLY SELECTION CHART

STRAIGHT
(Sold Separately)

RIGHT ANGLE
(Sold Separately)

OFFSET
(Sold Separately)



FASTENER	DIA.	STRAIGHT	*RIGHT ANGLE 1	OFFSET 3	
LGP®	5/32	LGP05-2480-10	LGP05-2480-20	LGP05-204C-250S	LGP05-204C-300S
Lightweight Groove Proportion LOCKBOLT	3/16	LGP05-2480-45	LGP06-2480-20	LGP05-204C-340S	LGP06-204D-300S
	7/32	LGP06-2480-10	LGP07-731-20	LGP06-204C-250S	LGP07-204D-300S
	1/4	LGP07-731-10	LGP07-731-45	LGP07-204C-250S	LGP07-204C-340S
		LGP08-2480-10	LGP08-2480-20	LGP08-204C-250S	LGP08-204D-300S
		LGP08-2480-45		LGP08-204C-340S	
LOCKBOLT, NAS SHEAR FULL TYPE, NAS TENSION FULL TYPE, NASS = SHEAR & GP®, NAST = TENSION	5/32	NASS05-731-10	NAST05-730B-20	NASS05-204C-250S	NAST05-204C-250S
	3/16	NASS05-2480-20	NAST05-2480-20	NASS05-204C-300S	NAST05-204C-300S
		NASS05-2480-45	NAST05-2480-45	NASS05-204C-340S	NAST05-204C-340S
	1/4	NAS06-730B-10	NAS06-2480-20	NASS06-204C-250S	NAS06-204D-300S
		NAS06-2480-45		NAS06-204C-340S	
		NAS08-730B-10	NAS08-2480-20	NAS08-204C-250S	NAS08-204D-300S
		NAS08-2480-45		NAS08-204C-340S	
COMMERCIAL LOCKBOLTS	3/16	LB06-722-20		NAS08-204C-250S	
	1/4	LB08-722-20		NAS08-204C-250S	
MULTI-GRIP LOCKBOLTS	3/16	MG06-713-60CN	MG06-722-60		
	1/4	MG08-722-20	MG08-722-60		
BLIND BOLT (SINGLE ACTION) WITH OR W/OUT DRIVE WASHER	1/8	SB04-752C-20	SB04-752C-45	SB04-751C-54RA	SB04-752B-430S
	5/32	SB05-752C-20	SB05-752C-45	SB05-751C-54RA	SB05-752A-430S
MS90353S & U / MS90354S & U	3/16	SB06-752B-20	SB06-752B-45	SB06-751B-54RA	SB06-204D-270S
MS2140S & U / MS2141S & U	1/4	SB08-713-20		SB08-713A-58RA	SB08-204D-370S
CR7000 SERIES, BACB30YY, YU, & YT	1/8	UBB04-752C-20	UBB04-752C-45	UBB04-751C-54RA	UBB04-752B-430S
	5/32	UBB05-752C-20	UBB05-752C-45	UBB05-751C-54RA	UBB05-752B-430S
MS90353S & U / MS90354S & U	3/16	UBB06-752B-20	UBB06-752B-45	UBB06-751B-54RA	UBB06-204D-270S
CR7000 SERIES, BACB30YY, YU, & YT	1/4	UBB08-713-20		UBB08-713A-58RA	UBB08-204D-370S
EN6122 & UAB130-EJ	5/32				
EN6127 & UAB127-EJ	3/16	UAB568-713-21	UAB568-713-61	UBB06-751B-54RA	UBB06-752A-430S
EN6128 & UAB100-EJ	1/4				
EN6129 & UABP-EJ	1/4				
BLIND RIVET (SINGLE ACTION) WITH OR W/OUT DRIVE WASHER	1/8	SMLS04-752C-20	SMLS04-752C-45	SMLS04-751C-54RA	SMLS04-752B-430S
	5/32	SMLS05-752C-20	SMLS05-752C-45	SMLS05-751C-54RA	SMLS05-752B-430S
	3/16	SMLS06-752B-20	SMLS06-752B-45	SMLS06-751C-54RA	SMLS06-752B-430S
NAS1900 S & U SERIES	1/4	SMLS08-713-20	SMLS08-713-45	SMLS08-713B-58RA	SMLS08-752B-430S
UNIMATIC® SINGLE ACTION	1/8	UBR04-752C-20	UBR04-752C-45	UBR04-751C-54RA	UBR04-752B-430S
NAS1919S & UNAS1921S & U	5/32	UBR05-752C-20	UBR05-752C-45	UBR05-751C-54RA	UBR05-752B-430S
"U" TYPE BLIND BOLT WITH DRIVE WASHER	3/16	UBR06-752B-20	UBR06-752B-45	UBR06-751C-54RA	UBR06-752B-430S
	1/4	UBR08-713-20	UBR08-713-45	UBR08-713B-58RA	UBR08-752B-430S
"A" CODE	3/32	3A-352B-25		3A-751C-54RA	
NAS1398A & NAS1399A	1/8	4A-752C-20	4A-752C-45	4A-751C-54RA	4A-752B-430S
	5/32	5A-752C-20	5A-752C-45	5A-751C-54RA	5A-752B-430S
	3/16	6A-752B-20	6A-752B-45	6A-751C-54RA	6A-752B-430S
	1/4	SMLS08-713-20			SMLS08-204D-270S
TRIVET®	3/16	6T-752A-21	6T-752A-61		
	1/4	8T-752A-21	8T-752A-61		
PROTRUDING HEAD, MULTI-GRIP BLIND RIVETS	3/16	MGL06-752A-21	MGL06-752A-61	MGL06-751C-54RA	
	1/4	MGL08-752A-21	MGL08-752A-61		
MONOBOLT®	3/16	MB06-752A-21	MB06-752A-61	MB06-751C-54RA	
	1/4	MB08-752A-21	MB08-752A-61		
CONTAINER BOLT (R 12) HLFP, HLRA, HLPE, HLPS HLPC & HLPSM	3/8	HT12-713-20			
TLR® RIVET	1/4	8TLR-352-21	8TLR-352-60		
CHERRYMAX®, CHERRYMAX® 'AB', BACR15FR/FP, BACR15GF/GK, NAS1900 S & U SERIES BLIND RIVET WITH DRIVE WASHER	1/8	456MAX-751-23	456MAX-751A-61	456MAX-751D-54RA	456MAX-731-430S
	5/32				
	3/16				
	1/4	08MAX-752B-20	08MAX-752B-45	08MAX-713A-58RA	08MAX-204D-270S
ASP®	13/64	ASP06-752C-20	ASP06-752C-45	ASP06-751B-54RA	ASP06-752B-430S
ASP 2, ASP PF, ASP 4 FF, ASP 2 F, ASP 2 LC	17/64	ASP08-752B-20	ASP08-752B-45	ASP08-752B-430S	ASP08-752B-430S
	21/64	ASP10-713-20	ASP10-730-45	ASP10-204D-270S	ASP10-204D-370S
STANDARD MBO®	1/8	MB04-752C-20	MB04-752C-45	MB04-751C-54RA	MB04-752C-430S
NAS1719, NAS1720	5/32	MB05-752C-20	MB05-752C-45	MB05-751C-54RA	MB05-752C-430S
NAS1721	3/16	MB06-752B-20	MB06-75B-45	MB06-751C-54RA	MB06-752C-430S
MBO® LOCK CREATOR	1/8				
NAS1719(XL), NAS1720(XL)	5/32	456MAX-751-23	456MAX-751A-61	456MAX-751D-54RA	456MAX-731-430S
NAS1721(XL)	3/16				
GROUND STUD, MB3454 & BAC553B s	8/32	GS8-752C-20	GS8-752C-45	GS8-751C-54RA	GS8-751A-430S
	10/32	GS10-752C-20	GS10-752C-45	GS10-752A-54RA	GS10-751A-430S
OPEN END, CLOSED END, CSUNK, PROTRUDING HEAD	3/32	3N-751-23	3N-352-61	3N-751B-54RA	3N-751-430S
COMMERCIAL NAIL RIVETS	1/8	4N-751-23	4N-352-61	45N-751B-54RA	4N-751-430S
	5/32	5N-751-23	5N-352-61	45N-751B-54RA	5N-751-430S
	3/16	6N-751-23	6N-352-61	6N-751C-54RA	6N-751-430S

UNIMATIC®, LGP®, GP®, BOM®, AND ASP® ARE REGISTERED TRADEMARKS OF ARCONIC INC. MONOBOLT® AND TLR® ARE REGISTERED TRADEMARKS OF AVDEL UK LIMITED. TRIVET®, CHERRYMAX®, MAXI-BOLT®, AND MBO® ARE REGISTERED TRADEMARKS OF CHERRY AEROSPACE.

GAGE BILT CERTIFIES THE GB2480(A) TOOL WILL INSTALL THE ABOVE FASTENERS

*REDUCING POWER UNIT PRESSURE TO 3500PSI IS RECOMMENDED.
1) RIGHT ANGLE NOSES REQUIRE 248153 STROKE LIMITER & 248155 RELIEF VALVE.
2) INSTALLS 1/8", 5/32" AND 3/16" DIAMETERS.
3) OFFSET NOSES REQUIRE 751204 ADAPTER AND 248152 STROKE LIMITER & 248154 RELIEF VALVE.
4) INSTALLS 5/32", 3/16" AND 1/4" DIAMETERS.
5) BAC553B -10 ONLY

NOTE: THE LAST 2 DIGITS OF THE NOSE ASSEMBLY REPRESENTS THE LENGTH THE NOSE EXTENDS FROM THE TOOL. I.E. -20 = 2.0 INCHES